

LIVING THE KNIGHT LIFE





UCF

DINING SERVICES



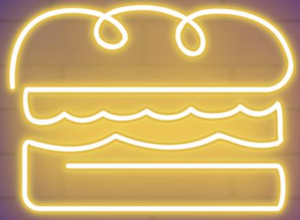
Dining Services



MEAL PLAN



Ace Your Appetite



ALL YOU CARE TO EAT

- Over 9 stations to choose from
- Need your meals to go? Purchase a reusable to-go container.



ON THE GO

20+ locations across campus



Hours of service available at
www.ucfdining.com

Student Favorites



LOCAL RESTAURANT
ROW

GLOBAL FLAVORS. LOCAL FAVORITES.

Campus Dining Map

eating made easy

Location	Restaurants
ADDITION FINANCIAL ARENA	1 KNIGHTRO'S, 2 JIMMY JOHN'S
HEALTH & PUBLIC AFFAIRS I	3 STARBUCKS
STUDENT UNION	4 WHICH WICH, HUEY MAGOO'S, PANDA EXPRESS, QDOBA, STARBUCKS, STEAK 'N SHAKE, KNIGHTSTOP LRR, KNIGHTCADE, BENTO SUSHI
JOHN T. WASHINGTON CENTER	5 CHICK-FIL-A
EDUCATION BUILDING	6 KOTG: KNIGHTS ON THE GO LRR
UCF LIBRARY	7 EINSTEIN BROS BAGELS
TECH COMMONS	8 BARNIE'S COFFEE
BUSINESS ADMINISTRATION I	9 CAFÉ BUSTELO
REFLECTING POND	10 EINSTEIN BROS BAGELS
FERRELL COMMONS	11 TOPPERS
SOUTH ACADEMIC VILLAGE	12 '63 SOUTH, 13 UCF DINING SERVICES
REC & WELLNESS CENTER	14 CHICK-FIL-A
POD MARKET	15

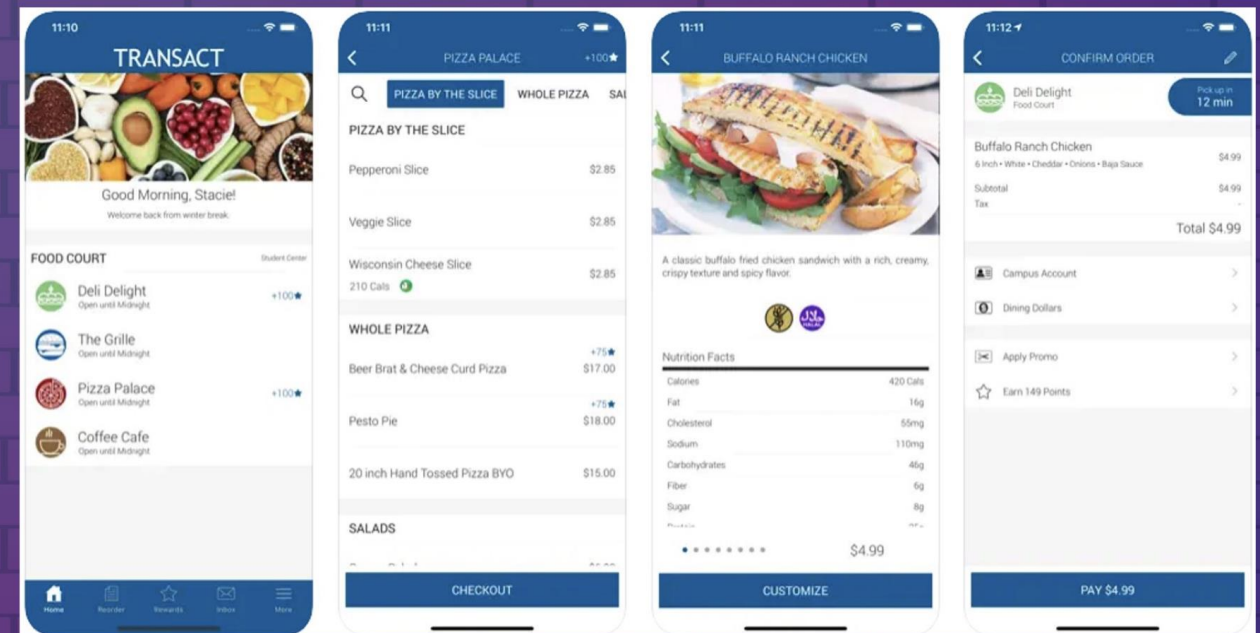
- USE MEAL SWIPES HERE
- ACCEPTS DINING DOLLARS
- LRR LOCAL RESTAURANT ROW LOCATION
- ACCEPTS TRANSCAT MOBILE ORDERING

UCF Dining Services | CONNECT WITH US @UCFDINING

Mobile Ordering

NOW AVAILABLE!

- Partnering with Transact Mobile
- Use your Dining Dollars, Credit Card, or Debit Card to Purchase
- Pickup your meal at select UCF Dining locations across campus (13 Locations)
 - Chick-fil-A
 - Starbuck's
 - Einstein Bros Bagels (Business Administration Building Only)
 - Panda Express
 - Huey Magoo's
 - Which Wich
 - Qdoba
 - Smoke n Donuts
 - Steak n' Shake
 - Barnie's Coffee & Tea
 - Jimmy John's







Knightro's



LOCAL
RESTAURANT
ROW

GLOBAL FLAVORS. LOCAL FAVORITES.



More to Explore



SPECIAL EVENTS & SURPRISE & DELIGHTS

Student-focused events and pop-ups that bring the campus community together



More to Explore

UCF COMMUNITY

- UCF Police Department
- UCF Arboretum
- UCF Housing
- UCF Wellness & Health Promotion Services
- UCF Fairtrade
- Coca-Cola Brand Ambassador

WELL-BEING

- Informative, teachable and healthy demonstrations
- Nutrition coaching with Wellness and Health Promotion Services

SUSTAINABILITY

- Partnering with UCF Fairtrade to achieve their certification
- Reducing our impact with reusable utensils in our dining halls
- Reusable to-go containers in our dining halls



Meal Plans



Know Your Perks



MEAL SWIPES



All you care to eat at
'63 South and
Knightro's Dining Halls



DINING DOLLARS



Use at all UCF Dining locations

- Including Local Restaurant Row
- Tax Exempt



Spring: On-Campus Residents



Any 10

\$1,999

10
MEAL SWIPES
per week

+ \$450
DINING DOLLARS

AVG COST PER MEAL
\$9.68

Any 14

\$2,355

14
MEAL SWIPES
per week

+ \$300
DINING DOLLARS

AVG COST PER MEAL
\$9.17

Unlimited

\$2,505

UNLIMITED
MEAL SWIPES

+ \$200
DINING DOLLARS

AVG COST PER MEAL
\$6.86

\$2,699

UNLIMITED
MEAL SWIPES

+ \$400
DINING DOLLARS

AVG COST PER MEAL
\$6.84

BEST VALUE

Spring: Commuter



Dining 800

\$800

0 MEAL SWIPES

+ \$800 DINING DOLLARS

ADDITIONAL DINING DOLLARS MAY BE ADDED IN INCREMENTS OF \$100

CREATE YOUR OWN MEAL PLAN

STEP 1 Choose your number of MEAL SWIPES	STEP 2 Choose your number of DINING DOLLARS	Total Cost	AVG COST PER MEAL
Knights 25 25 MEAL SWIPES	+\$400	\$669	\$10.75
	+\$500	\$739	\$9.56
	+\$600	\$829	\$9.16
Knights 50 50 MEAL SWIPES	+\$400	\$919	\$10.38
	+\$500	\$1,009	\$10.18
	+\$600	\$1,089	\$9.78
Knights 80 80 MEAL SWIPES	+\$400	\$1,249	\$9.99
	+\$500	\$1,319	\$10.23
	+\$600	\$1,399	\$10.61

*Off campus students can purchase a larger plan if it better suits their needs.

*Residency will be verified before activation.

Digital Resources



UCF Dining Services

University of Central Florida Dining Services

Meal Plans Dining Dollars Parent & Family Employment Orientation Locations & Menus Health & Wellness Sustainability Catering Contact Us

Mobile Ordering Find Your Fit Home Chef Discount

Locations

63 SOUTH Knights

UCF Dining Services

Meal Plans Dining Dollars Parent & Family Employment Orientation Locations & Menus Health & Wellness Sustainability Catering Contact Us

Meal Plans

How To Sign Up for a Meal Plan
Sign up by clicking the category below that best fits your lifestyle:
On-Campus Resident - Fall 2023/Spring 2024 Membership
Off-Campus Resident - Fall 2023/Spring 2024 Membership
Town, Lake Clark & Green Park Resident - Fall 2023/Spring 2024 Membership
Faculty and Staff Memberships

Add More Funds
Add more funds to your account when you're running low.

Need Help Choosing a Meal Plan?
Use our meal plan recommendation tool to find your fit!

About Your Meal Plan
More resources and information can be found below:
Meal Plans 101

Meal Plans Dining Dollars Parent & Family Employment Orientation Locations & Menus Health & Wellness Sustainability Catering Contact Us

UCF Dining Services

Meal Plan Terms & Conditions

Please scroll to bottom for deadlines and requirements surrounding upgrades, downgrades, and cancellations.

MEMBERSHIP TO AGREEMENT: This agreement is between Academic Educational Services, LLC (UCF Dining Services), and any person seeking dining memberships with the University of Central Florida (the Member). If the Member is a minor or suffers any incapacity affecting the Member's legal ability to enter into a contract, the Member shall also include the Member's parent or legal guardian. The Member may not designate another person to act as an agent or representative of the Member with regard to this agreement or having a third party sign up for or in its name. The Member remains personally responsible for all rights and obligations arising from or related to this agreement.

AGREEMENT: Submission of the UCF Dining Membership Agreement 2022-2023 by the Member and acceptance by UCF Dining Services will create a legally binding agreement. This agreement is effective once submitted electronically online or when a hardcopy agreement is received by UCF Dining Services. This agreement creates legal rights and obligations between the Member and UCF Dining Services. By accepting this agreement, the Member is acknowledging that the membership is voluntary, and that any known dietary restrictions have been reviewed and noted with the UCF Dining culinary team and proven to be accommodated prior to acceptance.

DUAL REPRESENTATION POLICY: UCF Dining Services will not make any oral agreement, make any oral representation to the Member or any person acting on behalf of the Member, or rely on any oral representation from the Member or any third party related to the UCF Dining Membership Agreement. The entire UCF Dining Membership Agreement is expressed or implied and supersedes any understanding that may have been communicated orally or implied. Neither the Member nor UCF Dining Services are relying on any oral or implied agreement, representation, or understanding of fact or law that is not expressed in writing.

OFFICIAL MEANS OF COMMUNICATION TO STUDENT: UCF Dining Services will communicate with the Member at the e-mail address appearing on the UCF Dining Membership Agreement, until the Member establishes a verified email account. Once a verified email account is established, all further communications will be to the Member's verified email account. To receive e-mail messages from UCF Dining Services, the Member must add utdining@ucf.edu to the Member's personal e-mail contact list. The Member has sole responsibility for checking the UCF Dining Services website and the Member's e-mail for communications related to this agreement, and for updating any contact information in a timely fashion.

OFFICIAL MEANS OF COMMUNICATION TO UCF Dining Services: Communications to UCF Dining Services

UCF Dining Services

UCF continues to closely monitor the evolving coronavirus (COVID-19) outbreak. Please continue to check the official UCF updates page for the most up-to-date information.

Meal Plans Employment Orientation Events Locations & Menus Health & Wellness Sustainability Catering Contact Us

Find Your Fit

Answer the questions based on the term you are thinking about buying a plan.

* = Required Fields

HOW WOULD YOU BEST DESCRIBE YOURSELF?*

- Student
- Parent or Family Member

WHICH BEST CLASSIFIES YOU?*

- Freshman
- Sophomore
- Junior
- Senior
- Graduate

WHICH BEST DESCRIBES WHERE YOU LIVE?*

- On-Campus
- Off-Campus

Important Dates



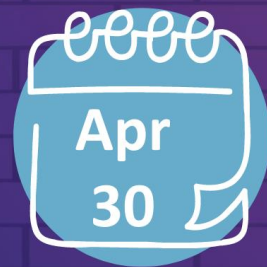
SPRING MEAL PLANS BEGIN

First day to use meal swipes and dining dollars



LAST DAY TO CHANGE A SPRING MEAL PLAN

Student must submit form to Dining Services



LAST DAY TO USE MEAL PLAN

Final day to use meal swipes and dining dollars



SIGN UP TODAY www.ucfdining.com

How to Sign Up



ONLINE

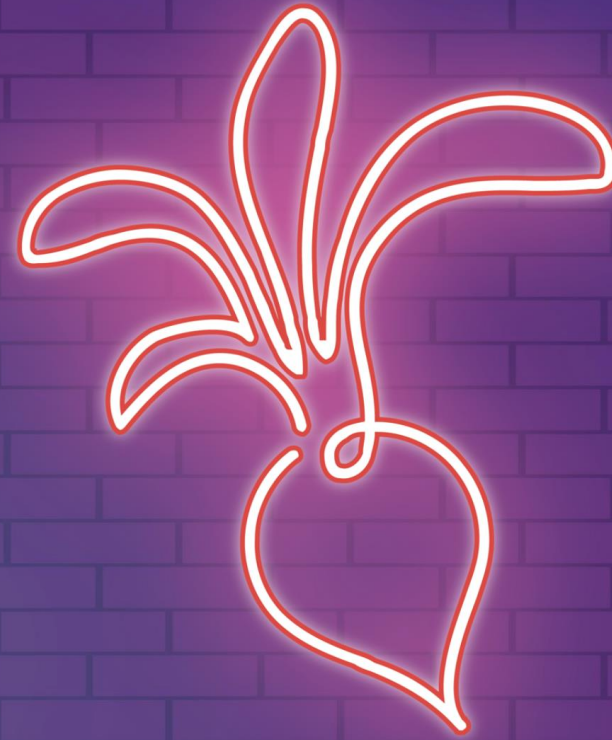
www.ucfdining.com

Hours of Operation Available

VISIT THE DINING OFFICE

Ferrell Commons, behind '63 South Dining Hall

Bill-to account and easy payment plan options are available!



Questions?

CONTACT US

407-823-2651

ucfdining@ucf.edu



@ucfdining

Job Hunting?



WORK ON CAMPUS!

Hiring at all UCF Dining restaurants



WORK AROUND YOUR CLASSES

Late night & weekend shifts available



GREAT BENEFITS

Access to Employee Discount Program, Employee Resource Groups, Assistance Programs, and Employee Events